

KONICA MINOLTA

bizhub PRO 1100e

GO FOR IMPRESSIVE PRINTS

RETHINK PRINT PRODUCTION



Giving Shape to Ideas

A NEW WORLD OF MULTIFACETED REPRODUCTION

INTRODUCING THE bizhub PRO 1100e FROM KONICA MINOLTA

The bizhub PRO 1100e delivers real value to any print production environment – with high-speed 100 ppm B&W output, high paper and toner capacity, standard built-in print controller and compact footprint to save space on your production floor. Dedicated to central in-house printing facilities and external print-for-pay services – this device provides sturdy construction, high performance and smart inline finishing options teamed up with advanced technology for enhanced B&W print quality. Be more productive with high-performance color scanning capability with dual scanning ADF in combination with the powerful print engine.

Maximise your investment

We want to make sure that you get the most out of your bizhub PRO 1100e – that's why we have improved set-up times to improve your production time. Combined with one of our software offerings you can automate your workflows and increase the benefits of your investment

Improve efficiencies

Operators of our production systems can count on simple setup, an ultra-reliable paper path, exceptional productivity and outstanding automated image stability. Our R&D Team has put highest priority to fulfill today's high demands in the printing industry.

A single engine does it all

The bizhub PRO 1100e is an entry level production machine that you can fully rely on. It offers a variety of inline finishing options to meet your clients' every need in one process.





INNOVATE PRINT

RETHINK TECHNOLOGY

Konica Minolta's own advanced colour processing technology of the second generation is called **S.E.A.D.**, which stands for "Screen-Enhancing Active Digital Process", and combines an array of technical innovations to guarantee truly exceptional colour reproduction at top speed. S.E.A.D. includes these important capabilities:

Pioneering media handling technologies

Optimise the superior print quality and professional look and feel of the finished print product. To prevent paper skew, the skew angle is measured based on the time gap and linear velocity of the paper being transferred and automatically stops printing when the paper skew exceeds a preset level. This prevents printing errors and problems that may occur following previous steps in the process.

Convenient front-to-back registration adjustment

bizhub PRO 1100e's front-to-back adjustment function automatically adjusts image position by using the original platen surface. The front-to-back side position and discrepancies in magnification are easily corrected, vastly improving the efficiency of registration adjustment.









EXPLICIT PRINT SERVER

RETHINK YOUR USER EXPERIENCE

KONICA MINOLTA'S OWN CONTROLLER TECHNOLOGY

- High-resolution printing is attributed to a real output of 1,200 dpi. Thin lines for tables, graphs and multi-gradient images are vividly reproduced, contributing to the creation of persuasive documents.
- When colour documents are printed, the input image is converted into CIE color space and then into the main unit's color space the main unit processes rich gradients while maintaining high productivity.

CIE Colour Space OFF



CIE Colour Space ON





STREAMLINE YOUR PRODUCTION

RETHINK YOUR WORKFLOW

Evolving from our expertise in precision technologies and more than 80 years of experience in the printing and imaging industries, bizhub PRO reflects our commitment to developing market-shaping technology with functionality that enables your business to grow. bizhub PRO, Konica Minolta's suite of digital solutions for professional printing, is one of the industry's most versatile and powerful tools to optimise print production operations and workflows.

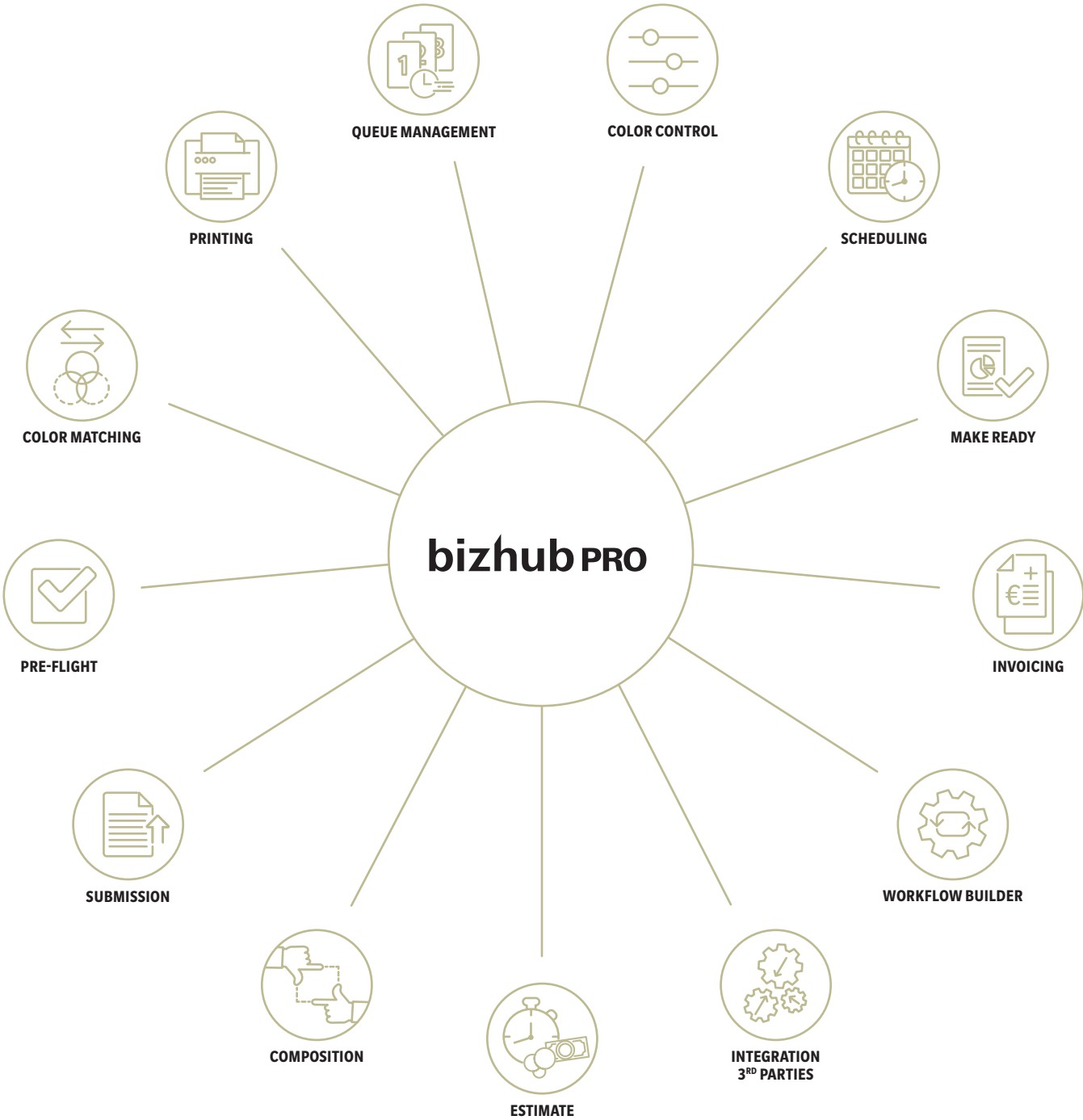
For all printing companies looking to integrate their printing as well as businesses that use digital printing to produce their own in-house publications and promotional materials, bizhub PRO boosts speed and

efficiency, expands capabilities and services, and reduces the need for operational manpower – all of which will help improve your profitability!

The comprehensive suite of features that bizhub PRO offers includes centralised management, software for automated workflow processing, colour management, seamless integration of different printing technologies and full connectivity of all Konica Minolta printing systems used from input to output.

bizhub PRO POSSIBILITIES

RETHINK YOUR WORKFLOW



YOUR ADVANTAGES WITH bizhub PRO 1100e

RETHINK PRINT-FOR-PAY

DURABLE PERFORMANCE

- Duty Cycle 2,25 million prints
- Up to 100 A4 pages per minute
- Up to 56 A3 pages per minute

READY-MADE PRINT PRODUCTS

- 20-sheet booklet making
- 100-sheet stapling with cutting mechanism
- GBC Punch G2 for heavy duty punching
- GBC Binder G1 for wire binding
- Max MB-200 for ring binding

GEARED-UP FINISHING

- Letter fold-in
- Stacking of up to 4,200 sheets
- Multi (GBC) punching and 2- & 4-hole punching

ENVIRONMENTAL AWARENESS

- Green procurement policy
- Reduced CO₂ emissions
- ISO 14001-certified
- Carbon-neutral printing available via our "Enabling Carbon Neutrality" program



HIGHEST RELIABILITY

- Long-life platform, long-lasting parts and consumables
- Scan Measurement Adjustment (SMA) Technology
- Belt transfer system

HIGH-END PRINT CONTROL

- Proprietary Konica Minolta controller
- Integration into Fiery workflows via Fiery Central Solo



EASE OF USE

- Simple paper catalogue settings
- Easy-to-follow on-screen instructions

SOPHISTICATED MEDIA HANDLING

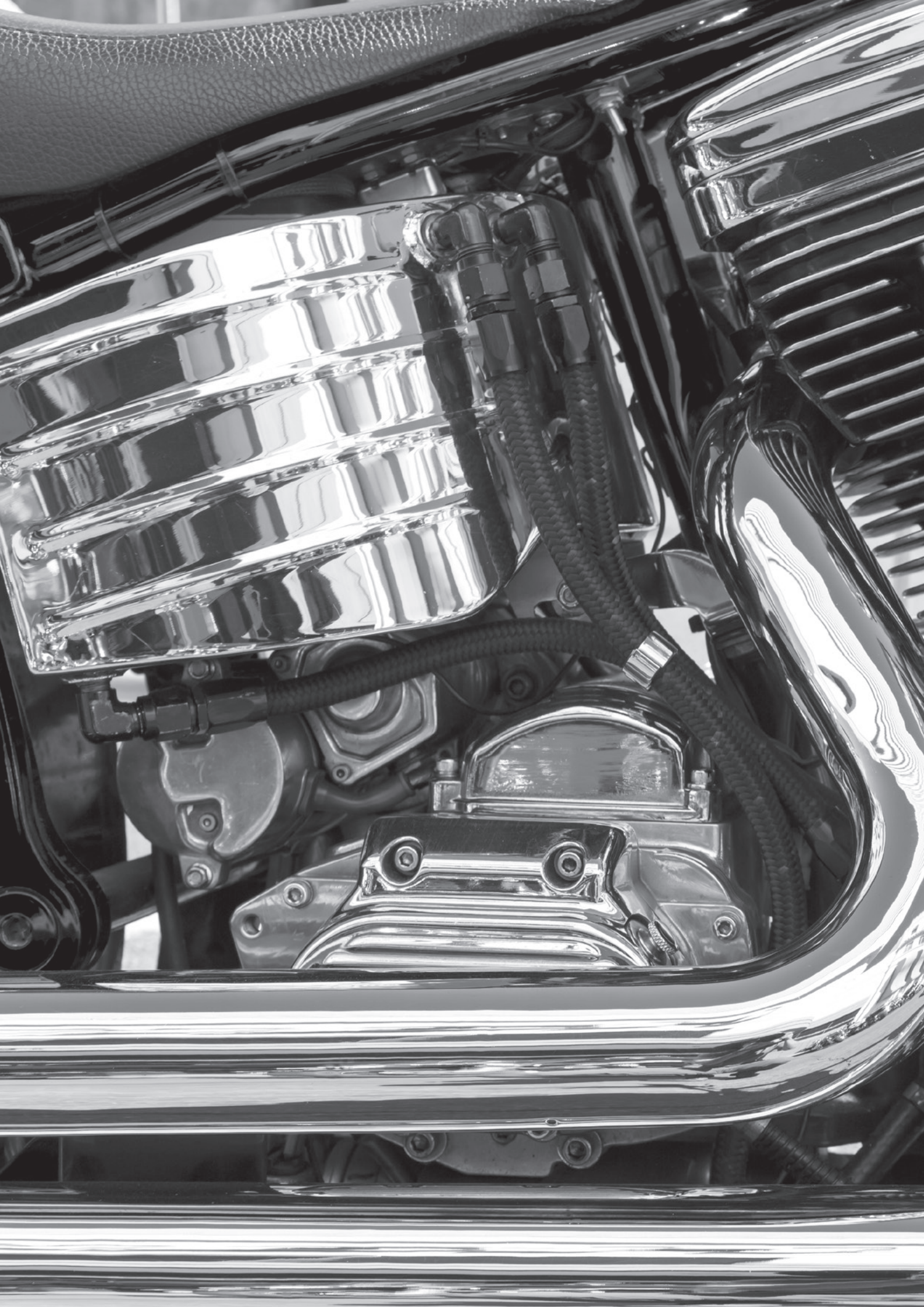
- Colour dual scan
- Optional bypass tray
- Up to 9,000-sheet paper input capacity
- Up to 5 paper input trays

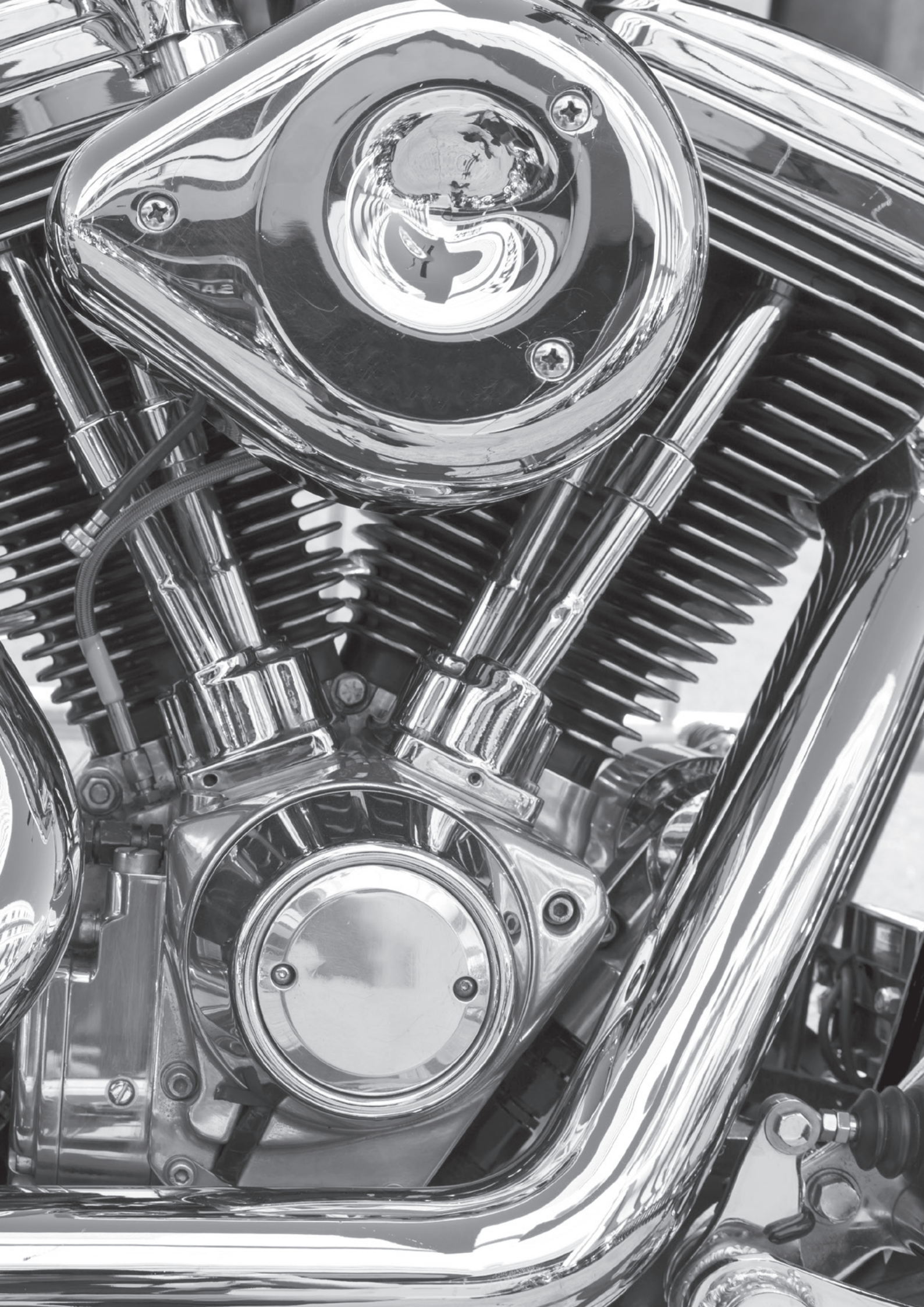
PERFECT IMAGE QUALITY

- 1,200 x 1,200 dpi resolution
- Tone Curve Utility
- Simitri® HD toner technology
- Image density control technology

COMPREHENSIVE MEDIA PROCESSING

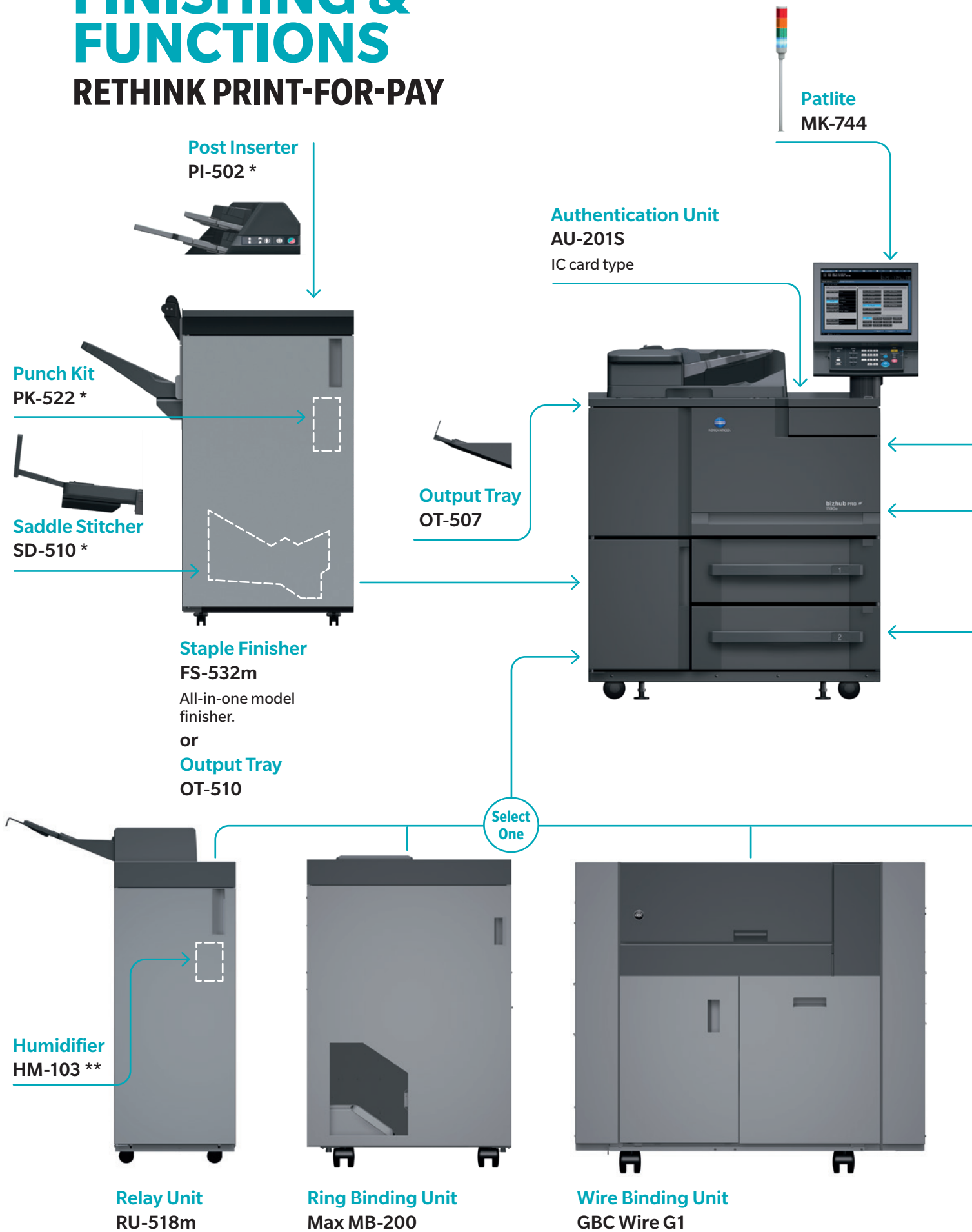
- Up to 300 g/m² paper weight in simplex & duplex printing
- Mechanical decurling as standard
- Multi bypass





FINISHING & FUNCTIONS

RETHINK PRINT-FOR-PAY



Removable Hard Disk
RH-101

HDD Inner-case Kit
HD-523



Paper Feeder Unit
PF-709

Select One



Large Capacity Unit (A4)
LU-411

Must Select



Multi Bypass
Tray Unit
MB-507

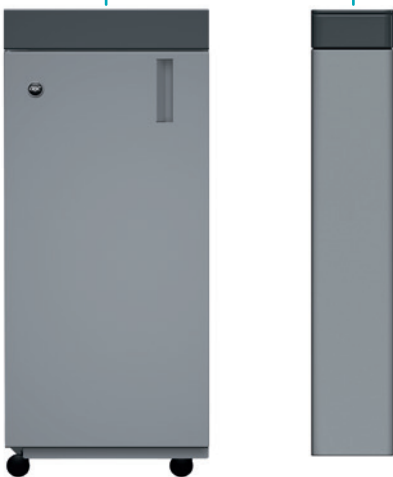
Select One



Large Capacity Unit (A3)
LU-412

Z Fold Unit
ZU-608

Combines hole-punching
and Z folding functions.



Inline Multi-punch unit
GBC Punch G2

* optional for FS-532m

** optional

10 GOOD REASONS FOR bizhub PRO 1100e



1. PERFECT IMAGE QUALITY

with Konica Minolta's own toner and processing technologies.



2. SEAMLESS INTEGRATION

into Konica Minolta's application portfolio.



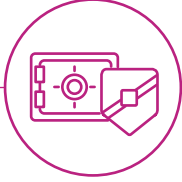
3. ADJUSTABLE CONFIGURATIONS

with numerous configuration options due to individual demands even with a very compact design.



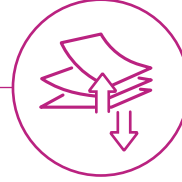
4. ENHANCE YOUR RANGE OF PRINT OFFERINGS

And fulfill today's demands for versatile and creative print products.



5. STURDY DESIGN

supports reliable high volume print production.



6. LONG PRINT RUNS

due to highest paper in- and output capabilities in its class.



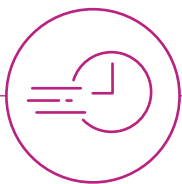
7. EASY TO USE GUI

even for novice operators, avoids or at least minimises learning curves.



8. BENEFIT FROM GREAT BUILT-IN TECHNOLOGIES

with advanced screening and registration technologies printing capabilities.



9. HIGH SPEED COLOR SCANNER

for speedy digitization of documents.



10. COMPLIANCE

with global environmental standards.

TAKE LEADERSHIP AND RESPONSIBILITY

RETHINK TOMORROWS BUSINESS

MADE YOUR BUSINESS

Commercial printers

Growing your business and getting the maximum out of your investment is what the bizhub PRO 1100e series promises. The high speed, high productivity and high uptime help you achieve shortest turnaround times. Combined with great media flexibility with stocks of up to 350 g/m², you further enhance the offerings of your print shop. Quality issues are a thing of the past, as these presses offer a wide range of tools to control and adjust themselves.

CRDs

bizhub PRO 1100e support a high degree of automation and yet also ensure high-level quality. Professional inline finishing produces ready-made print products at the click of a finger. Their versatile media flexibility and high productivity make bizhub PRO 1100e a solid and lucrative investment for the future.

DESIGN FOR OUR PLANET

Konica Minolta promotes sustainable development and integrates environmental and social perspectives into its business strategies. You can rely on Konica Minolta products to underpin your green strategy to build your business.

Committed to help prevent global warming, Konica Minolta strives to reduce CO₂ emissions during product manufacture, product distribution, at the sales stage, and during product use – with even stricter targets than demanded by the Kyoto Protocol. Enabling carbon neutrality, Konica Minolta offers its customers the offset of unavoidable CO₂ emissions for production printing. Together with the experts from Climate Partner, Konica Minolta proposes a new and profound eco concept for our professional production presses.





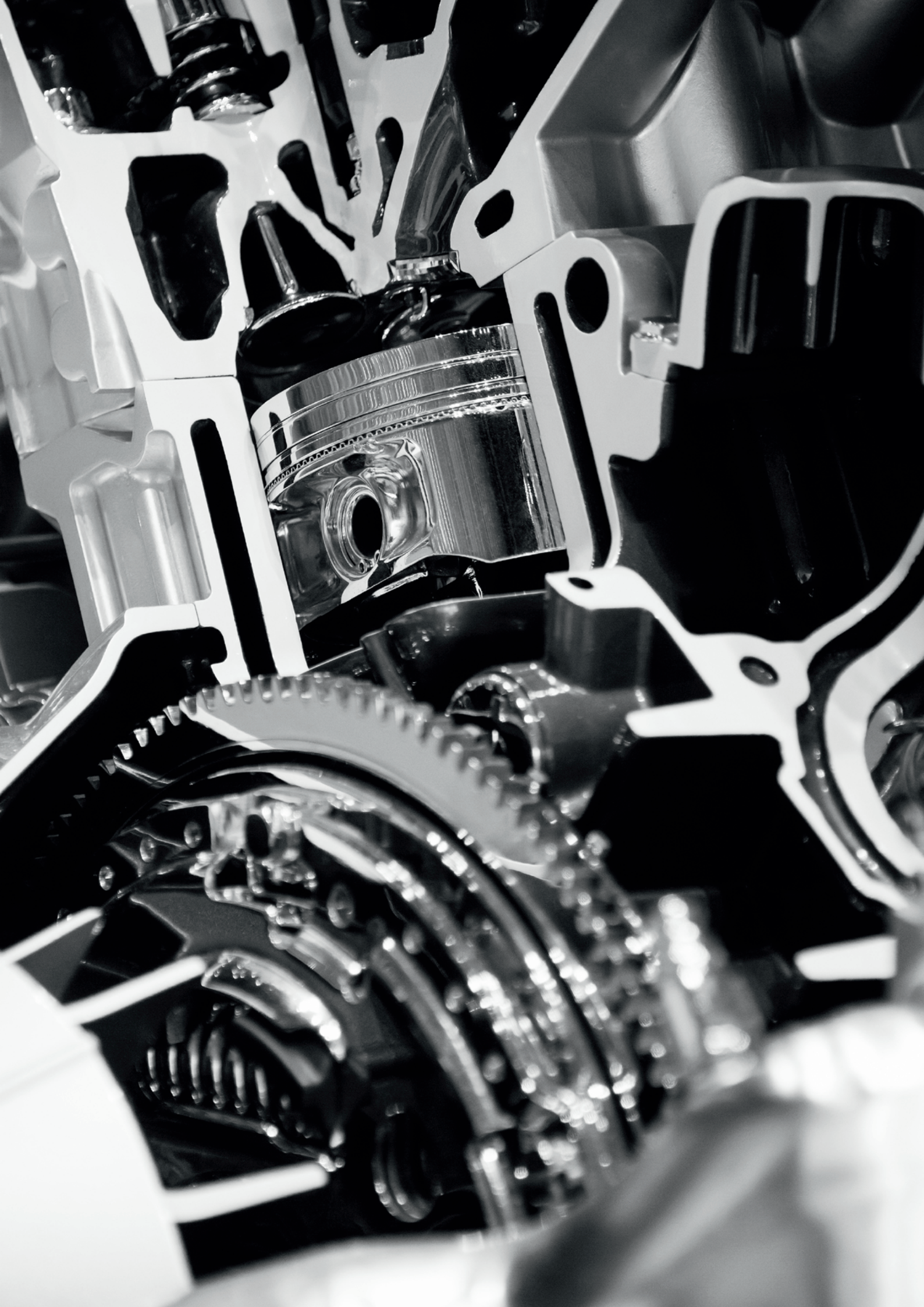


CONTROLLER AND OPTIONS

RETHINK THE NEEDS

KONICA MINOLTA CONTROLLER

Type	Built-in type
Resolution	Print: 1,200 x 1,200 dpi, 600 dpi x 600 dpi Scan: 200 dpi, 300 dpi, 400 dpi, 600 dpi
CPU	Pentium G3420 3.2GHz
Memory	8GB (DDR3 U-DIMM X2) 1600MHz
HDD	1TB (SATA/ 7,200 rpm / 3.5 inch)
Interface	Ethernet 1000BASE-T / 100BASE-TX / 10BASE-T, USB2.0 device, USB 3.0 host
Page Description Language	PCL5E/XL (PCL6) / Adobe PostScript3 (PS3020) / PDF directprint (PDF Ver.1.7) / TIFF (TIFF Ver.6) direct print/PPML (Ver 2.2)





KONICA MINOLTA

TECHNICAL SPECIFICATIONS

RETHINK INNOVATION

SYSTEM SPECIFICATIONS

Resolution	1,200 x 1,200 dpi
Paper weight	40–300 g/m ² (350 g/m ² optional*)
Duplex unit	Non-stack type; 40–300 g/m ²
Paper sizes	Standard: Min.: 182 x 139 mm Max.: 324 x 463 mm Optional: Min.: 95 x 139 mm* Max.: 324 x 483 mm**
Maximum image area	314 x 463 mm (up to 483 mm** optional)
Paper input capacity	Standard: 3,000 sheets Max.: 9,000 sheets
Paper output capacity	Max.: 4,200 sheets
Main unit dimensions (W x D x H)	990 x 910 x 1,454 mm
Main unit weight	340 kg

PRODUCTIVITY

A4 – max. per minute	100 ppm
A3 – max. per minute	56 ppm
SRA3 – max. per minute	53 ppm
A4 – max. per hour	6,000 pph
A3 – max. per hour	3,300 pph
SRA3 – max. per hour	3,120 pph

CONTROLLER

Embedded Konica Minolta controller

SCANNER SPECIFICATIONS

Scan speed A4	Up to 180 opm
Scan resolution	600 x 600 dpi
Scan modes	Scan to HDD; Scan to FTP; Scan to PC; Scan to eMail; Scan to WebDAV; Scan to USB Memory; HDD to FTP/ SMB/WebDAV
Scan formats	TIFF; PDF; Encrypted PDF; Compact PDF; XPS; JPEG

COPIER SPECIFICATIONS

Gradations	256 gradations
FCOT	Less than 3.4 sec. (A4 LEF)
Magnification	25–400%, in 0.1% steps
Mutiple copies	1–9,999

ACCESSORIES

Large capacity tray A4	LU-411
Large capacity tray SRA3	LU-412
Air assist paper feed unit	PF-709
Stapling unit	FS-532m
Saddle stitch kit for FS-532	SD-510
Punch kit for FS-532	PK-522
Post inserter for FS-532	PI-502
Removable HDD kit	RH-101 & HD-523
Multi bypass tray	MB-507
Output tray	OT-507
Open stacker	OT-510
Mount kit for 3rd party	MK-737
Wire binding unit	GBC Wire G1
Ring binding unit	Max MB-200
Inline Multi-punch unit	GBC Punch G2
Relay unit	RU-518m
Humidification unit	HM-103

* With PF-709

** With LU-412

– All specifications refer to A4-size paper of 80 g/m² quality.

– The support and availability of the listed specifications and functionalities vary depending on operating systems, applications and network protocols as well as network and system configurations.

– The stated life expectancy of each consumable is based on specific operating conditions such as page coverage for a particular page size (5 % coverage of A4).

– The actual life of each consumable will vary depending on use and other printing variables including page coverage, page size, media type, continuous or intermittent printing, ambient temperature and humidity.

– Some of the product illustrations contain optional accessories.

– Specifications and accessories are based on the information available at the time of printing and are subject to change without notice.

– Konica Minolta does not warrant that any prices or specifications mentioned will be error-free.

– All brand and product names may be registered trademarks or trademarks of their respective holders and are hereby acknowledged.